

# Project Report

# Blox, Copenhagen



Some terraces are publicly accessible and serve as meeting places with view of the waterfront.

## Project Data

Area: ca. 3.000 m<sup>2</sup>

Construction Year: 2017

Architect/Planner:  
OMA, Rotterdam

Landscape:  
OMA, Kragh & Berglund, 1:1 Landskab

System Build-up:  
"Walkway" with Elefeet®  
"Roof Garden" with Floradrain® FD 40-E

Coordinates:  
55°40'19.6"N 12°34'45.2"E

## Conception

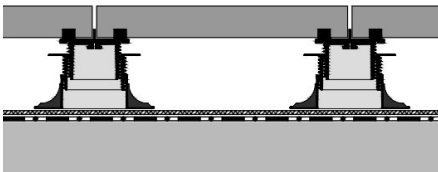
The visionary Bridge House project BLOX has been built on the site of a former brewery. The area was once cut through by one of Copenhagen's main ring roads. Now the BLOX building straddles this road and links the city centre to the waterfront and the Slotsholmen island. It has been designed as a public meeting point for different kinds of visitors: BLOX is flanked by a public harbour promenade and houses The Danish Architecture Centre (DAC), a café/

restaurant, offices, apartments, a fitness centre, a public underground garage and a playground. OMA architects achieved their aim of creating a striking and at the same time sustainable building by stacking various interlocking rectangular volumes. This simple architectural principle has produced a variety of roof areas on the six floors above ground level. All of them have been designed as terraces with concrete slabs on Elefeet® pedestals combined with vegetated areas.



Approx. 3.000 m<sup>2</sup> of walkways and vegetated areas have been installed on various terraces on different building levels.

## System Build-up

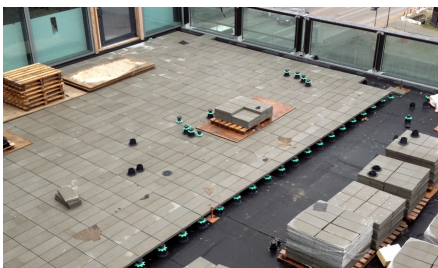


- Concrete or natural stone slabs
- Adjustable pedestal Elefeet®
- Elastosave ES 30
- Flat roof or terrace construction with root resistant waterproofing



Green Roof logistics were a big challenge: the crane had to be placed on a busy intersection.

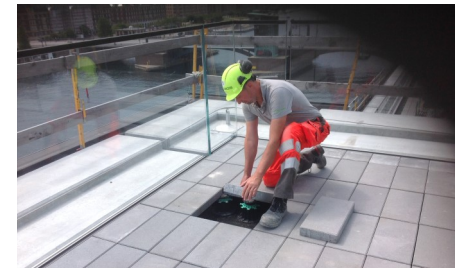
## Development



The terrace slabs for the roof areas are laid on vertically adjustable Elefeet® pedestals.



The planting beds were equipped with System Build-up "Roof Garden" with Floradrain® FD 40-E.



Inspections or possible readjustments of the Elefeet® pedestals are easy to carry out.